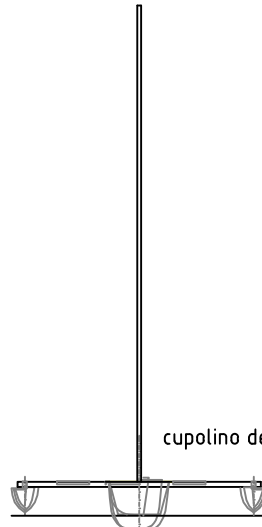
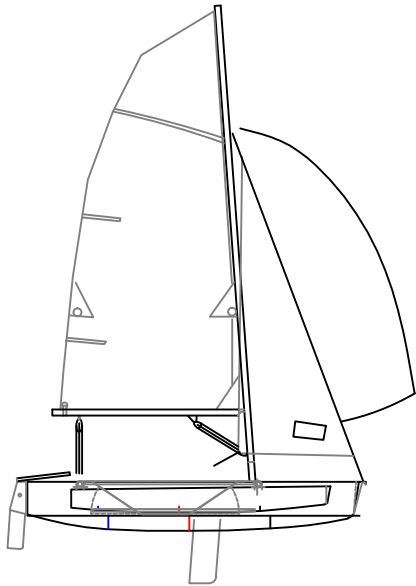


# SISTEMA ARCIPELAGO

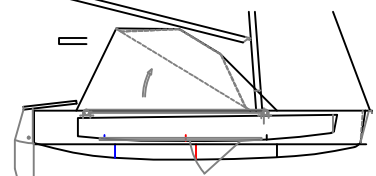
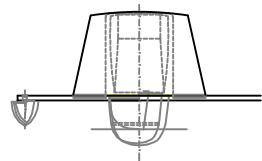
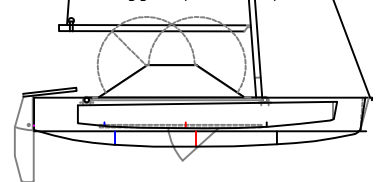
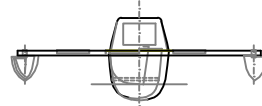
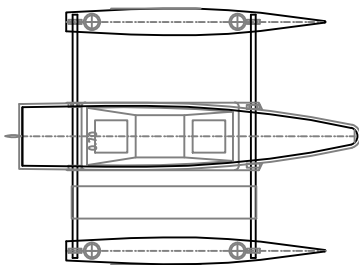


cupolino dentro lo scafo

## TRIMARANO

lunghezza ft 4,40 m  
 lunghezza sc 4,20 m  
 larghezza 3,40 m  
 peso 50+10+10+20 = 90 kg  
 superficie velica 11 mq  
 altezza albero (3,20+2,65)=5,65 m  
 dim albero 5650 x 75 x 50 mm

cupolino montato dritto in tratteggio sportelli aperti



tenda che copre pozzetto e cupolino aperto

